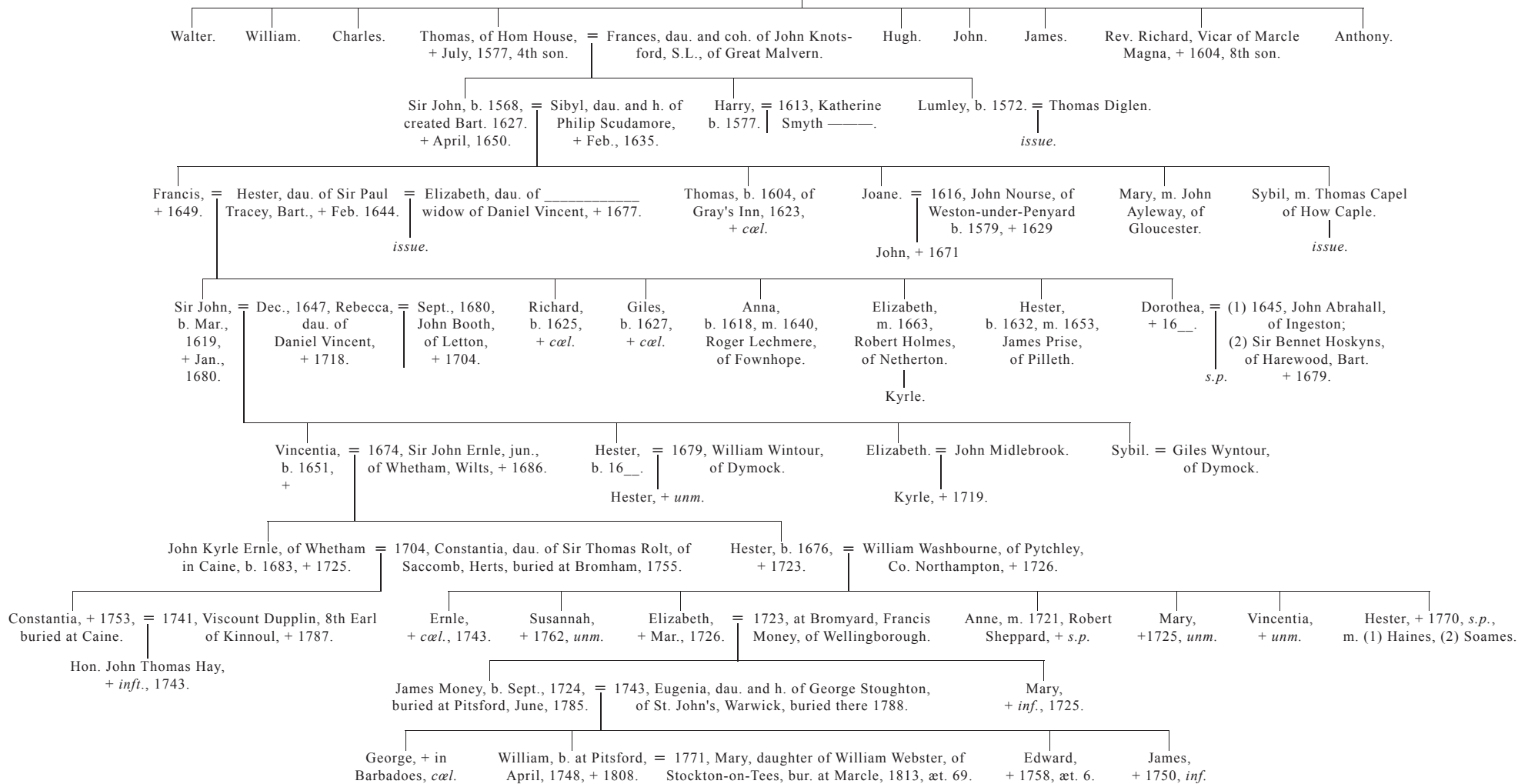


MONEY-KYRLE, OF HOMME HOUSE

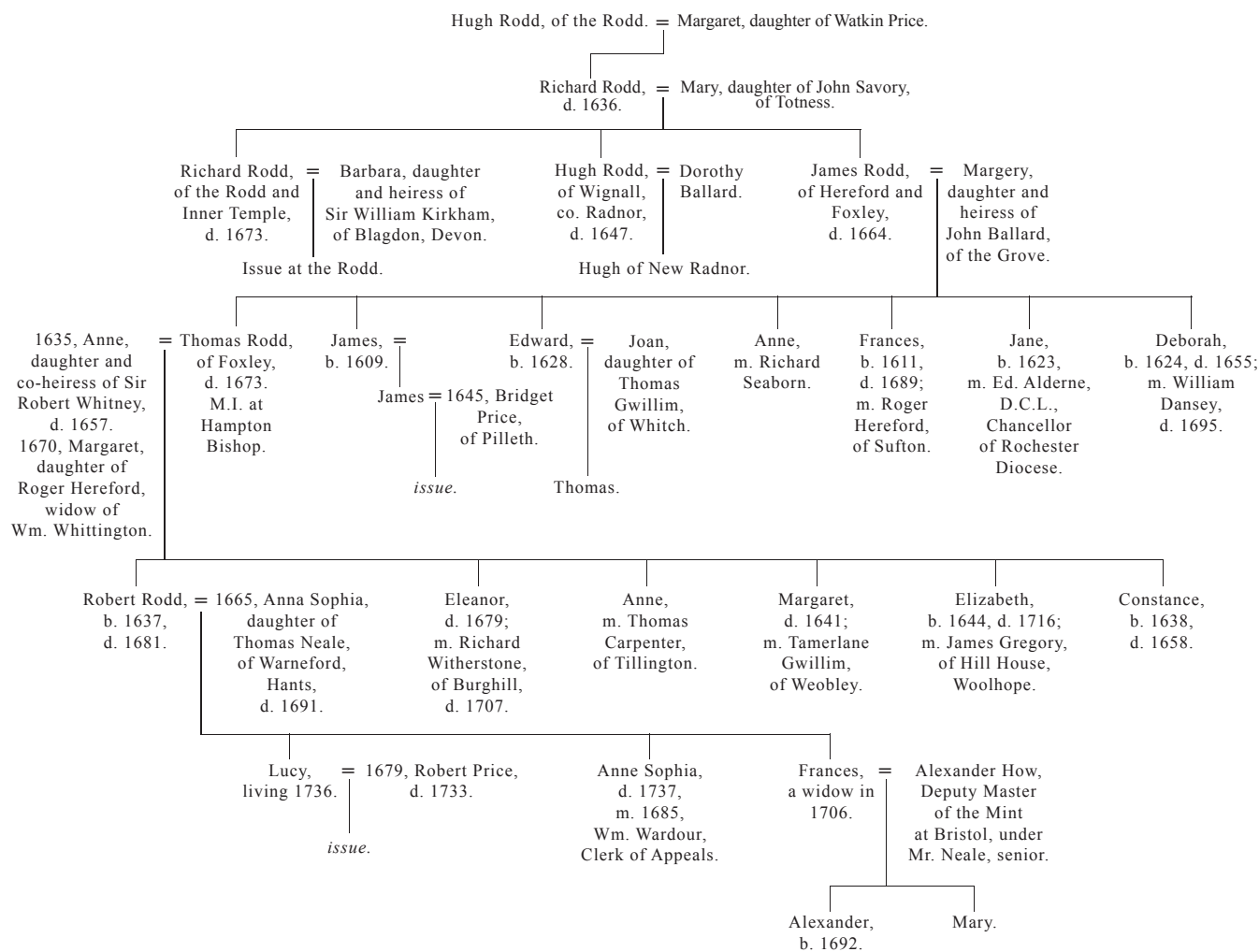
THOMAS KYRLE, of Walford Court. = JOAN, dau. of Hugh Abrahall.



RODD OF FOXLEY.

(Harl. MS. 6831.)

Arms—Two trefoils slipped sa., a chief of the last.



SCUDAMORE OF HOM LACY.

(MSS. Collections of R. B. Phillipps and I. Duncumb. Wills, Par. Reg., &c.)

Arms:—Gules, three stirrups leathered and buckled or.

